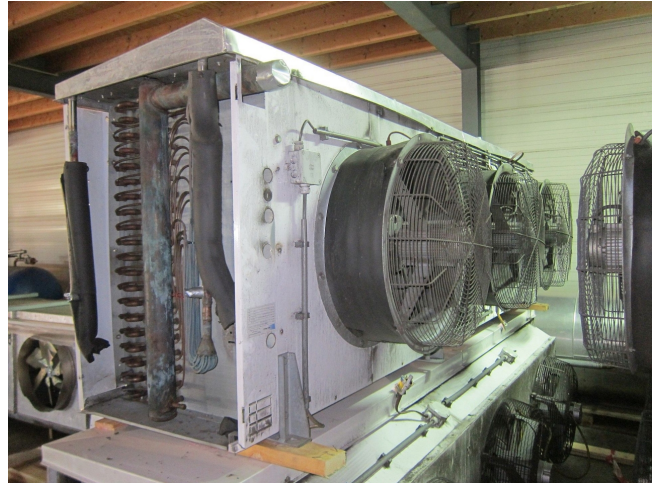


Helpman THOR-B 536-8 HG

Specifications

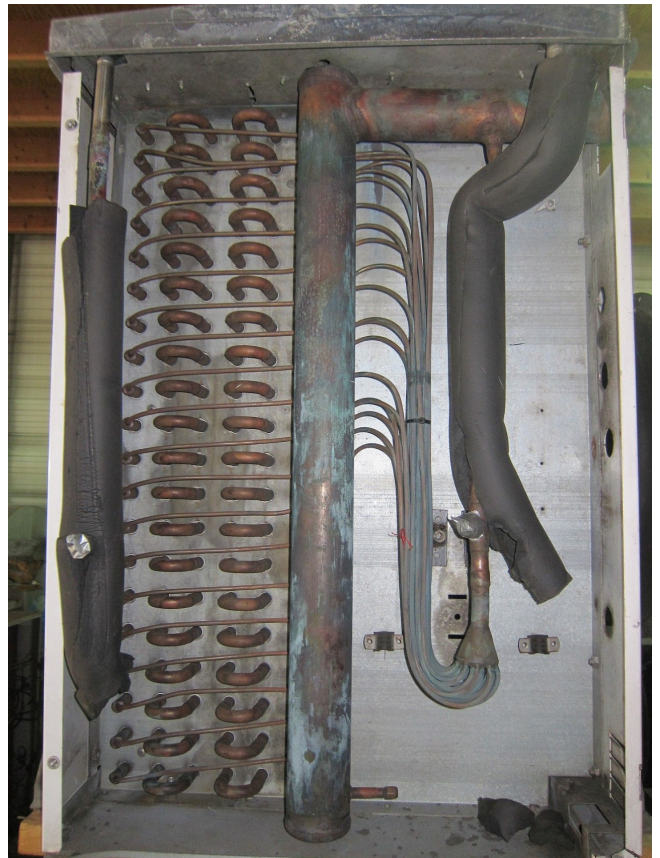
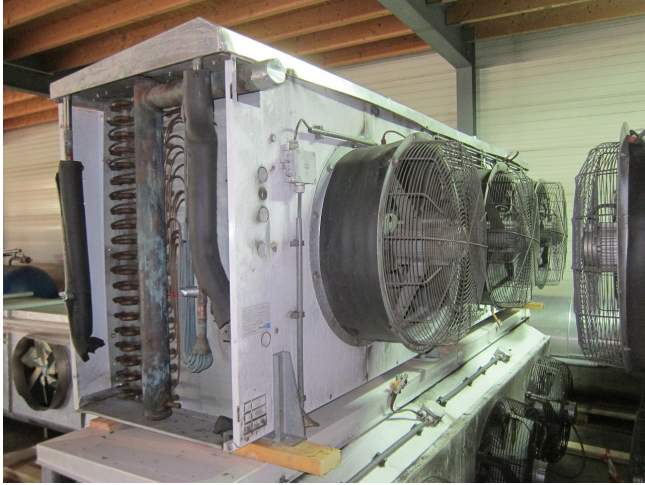
Marka	Helpman
Typ	THOR-B 536-8 HG
Ogólna wydajność w kW	44,3
Czynnik chłodzący	Freon
Liczba wentylatorów	3
Średnica wentylatora mm	8
Rozmrażanie	Hot Gas
Przepływ powietrza w m ³ /h	32500
Rozmiary	3520x1200x1080 mm (LxWxH)
Uwagi	# // y.o.b. 2004 (x2) // Fan: 1,4 kW / 1420 RPM / Ø = 600 mm
Remarks	surface 223,9 m ²
Volume	84 dm ³
Waga	376
Stock	2

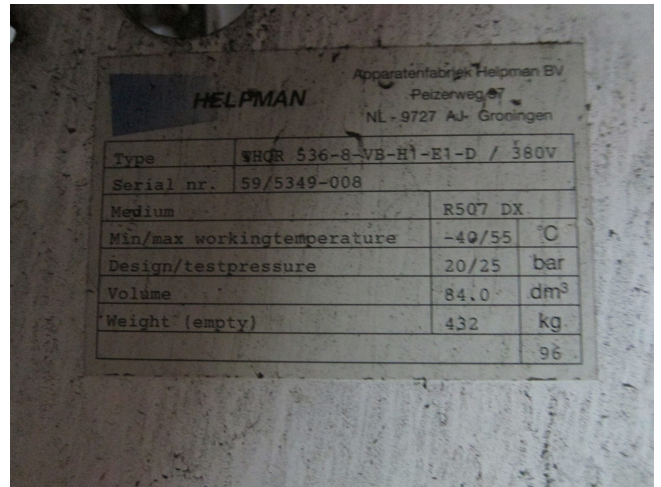


Description

Used Helpman THOR-B 536-8 HG

y.o.b. 2004 (x2) // Fan: 1,4 kW / 1420 RPM / Ø = 600 mm / 32500 m³/h





Capaciteiten R-404A / R 507A

Lamelafstand 8 mm

Koeler-model THQR	Capaciteiten kW		Lucht- hoev. m³/h	Koel- opp. m²	Inw. vol. dm³	Gewicht kg	Afmetingen		Ventilatoren		Aantal	Worp (m)		Geluids- niveau dB(A)
	Berijpt t _l =-8°C DT _l =8K	Droog t _l =-8°C DT _l =8K					Lengte A mm	Hoogte B mm	Ver- mogen kW	THQR-B		THQR-Z		
414-8	8.5	7.4	8780	39.8	19	100	1520	880	0.75	1	29	35	64	
416-8	11.8	10.3	8880	59.7	29	115	1520	880	0.75	1	28	34	64	
418-8	14.5	12.6	8980	79.6	38	131	1520	880	0.75	1	28	34	64	
424-8	17.0	14.8	17600	79.6	32	162	2520	880	0.75	2	29	35	67	
426-8	23.6	20.6	17400	119.4	48	192	2520	880	0.75	2	28	34	67	
428-8	29.0	25.2	17200	159.2	64	223	2520	880	0.75	2	28	34	67	
434-8	25.6	22.2	26300	119.4	45	223	3520	880	0.75	3	29	35	69	
436-8	35.5	30.8	26000	179.1	67	270	3520	880	0.75	3	28	34	69	
438-8	43.5	37.8	25700	238.8	90	316	3520	880	0.75	3	28	34	69	
444-8	34.1	29.6	35100	159.2	58	285	4520	880	0.75	4	29	35	70	
446-8	47.3	41.1	34700	238.8	86	347	4520	880	0.75	4	28	34	70	
448-8	58.0	50.4	34300	318.5	115	409	4520	880	0.75	4	28	34	70	
454-8	42.6	37.0	43900	199.0	70	347	5520	880	0.75	5	29	35	71	
456-8	59.1	51.4	43400	298.6	106	425	5520	880	0.75	5	28	34	71	
458-8	72.5	63.0	42900	398.1	141	502	5520	880	0.75	5	28	34	71	
464-8	51.1	44.4	52700	238.8	83	409	6520	880	0.75	6	29	35	72	
466-8	70.9	61.7	52100	358.3	125	502	6520	880	0.75	6	28	34	72	
468-8	86.9	75.6	51500	477.7	166	595	6520	880	0.75	6	28	34	72	
516-8	14.8	12.9	10800	74.6	36	133	1520	1080	1.20	1	30	36	65	
518-8	18.1	15.8	10700	99.5	48	155	1520	1080	1.20	1	30	36	65	
526-8	29.6	25.7	21700	149.3	60	255	2520	1080	1.20	2	30	36	68	
528-8	36.2	31.5	21400	199.0	80	298	2520	1080	1.20	2	30	36	68	
536-8	44.3	38.8	32500	223.8	84	378	3520	1080	1.20	3	30	36	70	